



DOCK HOUSE  
BY  
NEWMARK





A stone's throw from the alluring V&A Waterfront, located alongside the Time Ball Tower, Dock House Boutique Hotel offers the ideal balance between convenience and complete privacy. The hotel's charming exterior gives way to an opulent world beyond its front door. Chandeliers and ornate ceiling cornices, among other fine touches, create a sense of Victorian charm and allude to the property's historical roots, originally the Harbour Master's private residence in the 1800s.

Since then, the building has been transformed into a distinguished boutique hotel, voted among the top 25 luxury hotels in South Africa. It has been uniquely decorated with elaborate furnishings and bold artworks, maintaining the trait of classic exquisiteness throughout the establishment.

## ACCOMMODATION

---

Dock House Boutique Hotel comprises five supremely elegant rooms, as well as one spacious suite. These have been individually decorated and imbued with understated Victorian elegance, which complements the property's lush contemporary style. For absolute privacy, the whole hotel may be booked out for exclusive use, at an additional cost. In this case, guests will have private use of the dining room for breakfasts, lunches and dinners.



### LUXURY SUITE

The one Luxury Suite is exceptionally glamorous with the bedroom opening up to a private and beautifully manicured courtyard garden.

- Suite Size: 70m<sup>2</sup>
- Television with satellite channels
- Minibar
- Nespresso machine with complimentary coffee and teas
- King size bed
- Luxury cotton linen
- Air conditioning
- En-suite designer bathroom
- Heated towel rails
- Bathrobes and slippers
- Hairdryer
- International plugs
- Electronic safe

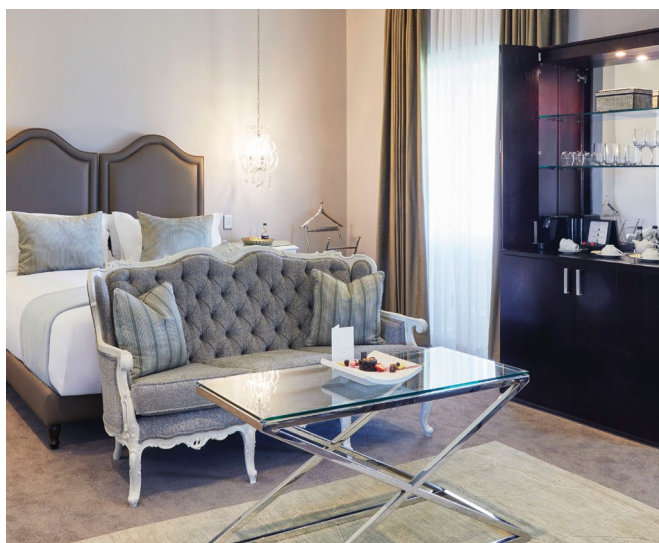




## LUXURY ROOMS

Each of the five luxury rooms has its own character, united by a shared sense of sophistication. Five upstairs rooms have private balconies—three with harbour views, two overlooking the garden and pool. One upstairs room has no balcony, while the ground floor room opens onto a veranda with garden-side tranquillity.

- Average Room Size: 60m<sup>2</sup> (Four rooms); 45 m<sup>2</sup> (One room)
- One set of inter-leading rooms (Rooms 3 and 4)
- Television with satellite channels
- Mini bar
- Nespresso machine with complimentary coffee and teas
- King size bed
- Luxury cotton linen
- Air conditioning
- En-suite designer bathroom
- Heated towel rails
- Bathrobes and slippers
- Hairdryer
- International plugs (Upon Request)
- Electronic safe









## SERVICES & FACILITIES

---

- Complimentary beverage on arrival
- Elegant morning room
- Library
- Concierge service
- 24-hour room service
- Room servicing daily
- Laundry and dry-cleaning services, at an additional cost
- Travel consultancy and information service
- Airport, city, and restaurant transfers at an additional cost
- Secure parking
- Facilities for persons with limited mobility
- Wi-Fi throughout the hotel
- Environmentally friendly amenities
- Butler service

### TERRARIUM BY CHRIS ERASMUS

---

Terrarium by Chef Chris Erasmus is an edgy fine-dining restaurant, nestled in the Queen Victoria Hotel. Founded on a farm to table ethos, focusing on seasonal, hyperlocal ingredients infused with creativity and innovation, choose from an eight-course Fauna or Flora menu or à la carte menu.



### GINJA RESTAURANT

---

Situated on the water's edge at the Victoria & Alfred Hotel, GINJA offers contemporary dining and a chic atmosphere. Experience an exquisite winelist showcasing the region's finest wineries, whilst taking in uninterrupted views of Table Mountain. Open daily from breakfast to dinner, as well as an exceptional Sunday brunch spread.



### SWIMMING POOL

---

A pristine swimming pool, surrounded by a beautiful courtyard at Dock House Boutique Hotel, offers guests the opportunity to cool off on warm days. A bar and a number of deck chairs alongside the pool invite guests to relax and absorb the view of Table Mountain.



### SANCTUARY SIGNATURE SPA

---

This modern and elegant spa allows guests to unwind completely, with a variety of treatments and world-class products available. Guests are further able to book a relaxing session in the Tylarium, a unique combination of both a traditional sauna and a soft, mild steam bath.

## GYM

Guests are welcome to make use of the fully equipped gym, located next to Sanctuary Signature Spa. Personal training sessions are offered up on request, at an additional cost.



## WEDDINGS & EVENTS

The beautiful Dock House Boutique Hotel premises make for a unique and private wedding setting in the heart of the V&A Waterfront, with lovely views of Table Mountain.



## GENERAL INFORMATION

### CHECK-IN AND CHECK-OUT TIMES

Check-in: 14H00  
Check-out: 11H00

### DISTANCES

25 km to Cape Town International Airport  
2 km to Cape Town International Convention Centre  
2 km to Cape Town CBD

### CHILD POLICY

- Children of all ages are welcome
- Cots available for children up to the age of two
- Extra bed can not be accommodated
- No child rates apply (accommodation is charged per room, per night)
- Persons twelve years and older are considered adults and will require their own room/s at the applicable rate
- Child minding service available up on request with a minimum of 24 hours' notice, at an additional cost

### ADDRESS

**Physical Address:**  
Portwood Close  
Portwood Ridge  
V&A Waterfront  
Cape Town  
8001  
South Africa

**Postal Address:**  
P.O. Box 50050  
Waterfront  
8002  
South Africa

**GPS Co-ordinates:**  
-33.905604|18.41904

### CONTACT

**Reservations:**  
Tel: +27 21 427 5901  
Email: [reservations@newmarkhotels.com](mailto:reservations@newmarkhotels.com)

**Hotel:**  
Tel: +27 21 418 1466  
Email: [reservations@newmarkhotels.com](mailto:reservations@newmarkhotels.com)  
[www.newmarkhotels.com](http://www.newmarkhotels.com)





## LOCALITY

---

### TEMPERATURE

#### Average Day Temperatures:

26°C (December to March)  
21°C (April to May)  
19°C (June to September)  
22°C (October to November)

### ELECTRICITY

220 V  
International adaptors  
(Available upon request).

### CURRENCY

South African Rand (ZAR)  
All credit cards are accepted.  
No cheques accepted.

### HEALTH

It is recommended that guests contact their local travel clinic for advice on the necessary precautionary measures for visits to this region.

### SUGGESTED PACKING LIST

- A variety of light-weight and warm clothing as Cape Town's weather can be unpredictable
- A hooded jacket for rainy seasons
- Walking shoes
- Beachwear
- Hat
- Sunblock
- Sunglasses
- Camera

## ABOUT CAPE TOWN

---

Cape Town, otherwise known as "The Mother City", is a cherished destination among locals and internationals alike. The city is the legislative capital of South Africa and is located on a peninsula, on the country's southwest coast. It has, in recent years, been named the best place in the world to visit by leading international media – and the reasons for this are unmistakable. Cape Town is rich in natural beauty, diversity, entertainment and world-class developments.

The region's Mediterranean climate makes for pleasant summers, although winds can pick up. Not withstanding Cape Town's unpredictable weather, which has earned it the reputation of having four seasons in one day, the city experiences an average of over 3000 hours of sunshine a year. Winters are typically rainy, but the city takes on a cosy, European atmosphere which is easily embraced at one of the Winelands' many estates, alongside a fireplace.

