

1682 | STELLENBOSCH

BLAAUWKLIPPEN

MANOR

BY
NEWMARK



Rich in history and characterised by country-life charm, Blaauwklippen Manor is a tranquil retreat in the globally celebrated winemaking region of Stellenbosch. Set on the expansive Blaauwklippen wine farm, which dates back to 1682, this magnificent property comprises the Manor House and Jonkerhuis, both stunningly restored and furnished with modern finishes and each ideally suited for exclusive use.

ACCOMMODATION

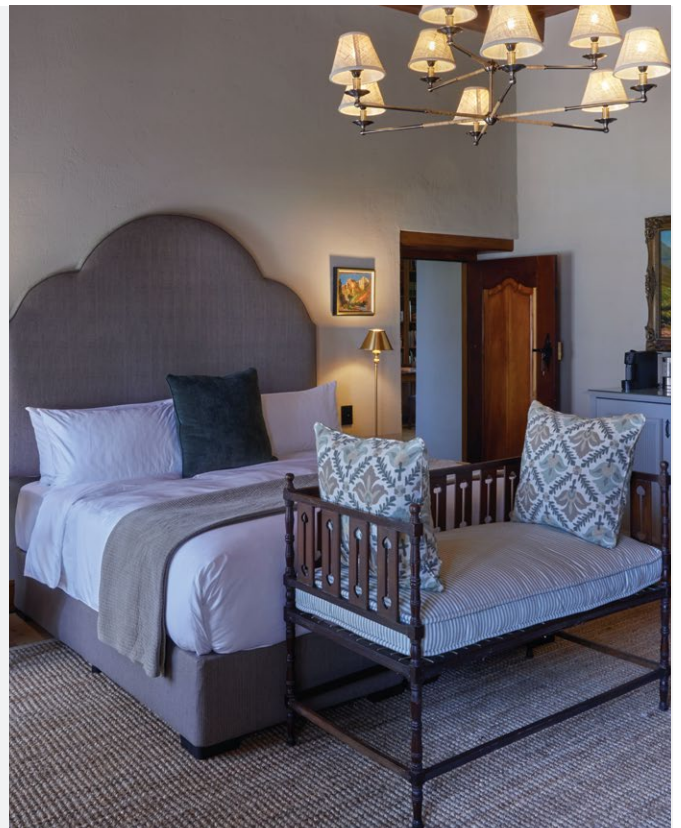
With an iconic winelands setting as its backdrop and picturesque lawns and gardens on its doorstep, Blaauwklippen Manor invites you to bask in an exclusive and highly luxurious homestead experience.

MANOR HOUSE

STANDARD ROOMS

The **Standard Room at Blaauwklippen Manor House** is a well-appointed 26 sqm space featuring a king-size bed, an en-suite bathroom with shower, and a selection of refined luxury amenities designed for a comfortable and considered stay.

- Air-Conditioning
- Complimentary bottled Water
- In-Room Safe
- Mini Bar unstocked
- In-Room Phone
- USB Charging
- Smart TV's
- Bathrobes in XL and L sizes
- Slippers
- Luxury Towelling
- Body Wash
- Shampoo
- Hand Wash
- Conditioner
- Coffee and tea facilities





SUPERIOR ROOMS

The **Superior Room** at **Blaauwklippen Manor House** offers a spacious 30 sqm interior, complemented by an 11 sqm private terrace. The room features a king-size bed, an en-suite bathroom with shower, and the same refined luxury amenities, with added outdoor space to enjoy the setting at your own pace.

2

- Air-Conditioning
- Complimentary bottled Water
- In-Room Safe
- Mini Bar unstocked
- In-Room Phone
- USB Charging
- Smart TV's
- Bathrobes in XL and L sizes
- Slippers
- Luxury Towelling
- Body Wash
- Shampoo
- Hand Wash
- Conditioner
- Coffee and tea facilities

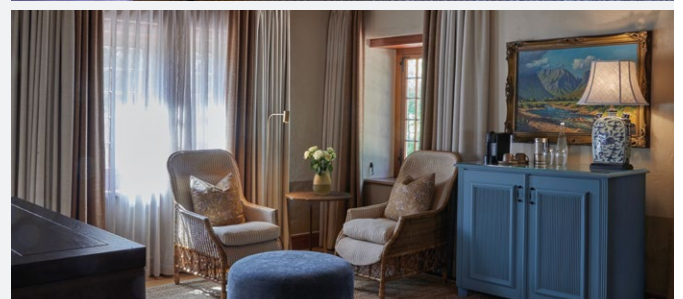
Luxury and Deluxe Rooms include a stocked minibar for the first night; any additional replenishment can be arranged on request and charged accordingly.

DELUXE ROOMS

The **Deluxe Room** at **Blaauwklippen Manor House** offers a generous 42 sqm layout with a king-size bed, an en-suite bathroom featuring both a shower and a bath, and access to a communal lounge area. Thoughtfully designed and well-appointed, it provides added space and comfort for a relaxed, unhurried stay.

- Air-Conditioning
- Complimentary bottled Water
- In-Room Safe
- Mini Bar unstocked
- In-Room Phone
- USB Charging
- Smart TV's
- Bathrobes in XL and L sizes
- Slippers
- Luxury Towelling
- Body Wash
- Shampoo
- Hand Wash
- Conditioner
- Coffee and tea facilities

Luxury and Deluxe Rooms include a stocked minibar for the first night; any additional replenishment can be arranged on request and charged accordingly.



LUXURY SUITES

The **Luxury Suites** at **Jonkershuis at Blaauwklippen** offer generous interiors ranging from 53 to 55 sqm, each complemented by a private terrace measuring between 9 and 18 sqm. Designed for space and comfort, these suites are well suited to longer stays. **Rooms 1010 and 1011** feature interleading bedrooms, making them a practical and comfortable option for families travelling together.

- Air-Conditioning
- Complimentary bottled Water
- In-Room Safe
- Mini Bar unstocked
- In-Room Phone
- USB Charging
- Smart TV's
- Bathrobes in XL and L sizes
- Slippers
- Luxury Towelling
- Body Wash
- Shampoo
- Hand Wash
- Conditioner
- Coffee and tea facilities

Luxury Suites include a stocked minibar for the first night; any additional replenishment can be arranged on request and charged accordingly.





SERVICES & FACILITIES

- WiFi throughout the hotel
- Complimentary beverage on arrival
- Alcoholic & non alcoholic beverage available
- Laundry service, at an additional cost. 24 hour turnaround if received by 9:00am
- Housekeeping, offered daily
- A complimentary Standard Wine Tasting included as part of your stay
- Complimentary parking on the estate

EXPERIENCES



DINING

Breakfasts and lunches are available at the Estate's restaurant, De Blaauwe Kitchen.



TASTING HOUSE

Enjoy a unique seasonal wine pairing journey, in which winemaker, Narina Cloete, has worked together with the chef to harmonise a 'leisurely, mostly savoury' pairing experience.



IS ART GALLERY

Created in collaboration with Ilse Schermers-Griesel of IS Art, the gallery at Blaauwklippen acts as an additional dimension to be enjoyed at the Tasting House.



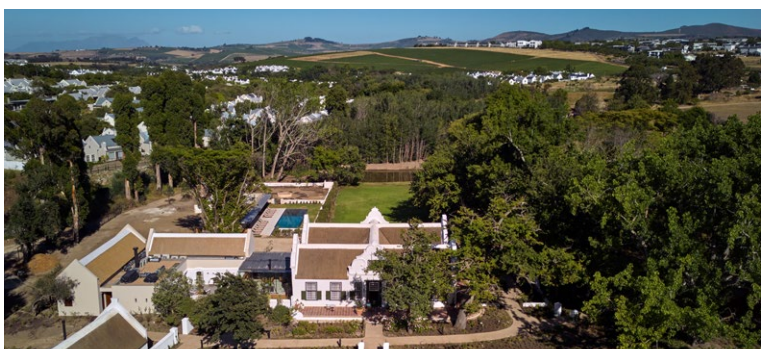
PUMP TRACK

The estate's specialised experience center and bike park, perfect for kids and the adventurous at heart, feature a Velosolutions pump track and kids' play area with a jungle gym.



FAMILY MARKET

Weather permitting, the family friendly Blaauwklippen market is open on weekends, offering an assortment of locally sourced and organic food and produce, along with other goods.



WEDDINGS

Magnificent scenery, historic buildings and striking design features make Blaauwklippen the perfect destination for truly unforgettable event experiences.

GENERAL INFORMATION

CHECK-IN AND CHECK-OUT TIMES

Check-in: 14H00
Check-out: 11H00

DISTANCES

35.5km to Cape Town International Airport
17.2km to Erinvale Golf Club
1.8km to Stellenbosch Golf Club

CHILD POLICY

- Children of all ages welcome
- Please note that there are no family rooms and no extra full beds are available
- One cot and one fold-up mattress are available for use on request

LOCATION

Physical Address:
Strand Road,
R44 Stellenbosch,
Stellenbosch,
7600

Postal Address:
Strand Road,
R44 Stellenbosch,
Stellenbosch,
7600

GPS Co-ordinates:
-33.9690° S | 18.8448° E

CONTACT

Reservations:
Tel: +27 21 427 5901
Email: reservations@newmarkhotels.com

Hotel:
Tel: +27 21 880 0133
www.blaauwklippen.com

LOCALITY

TEMPERATURE

Average Day Temperatures:
26 °C (December to March)
21 °C (April to May)
19 °C (June to September)
22 °C (October to November)

ELECTRICITY

220 V
International adaptors are available on a returnable deposit basis.

CURRENCY

Currencies: South African Rand (ZAR).
All credit cards accepted. (No dinner cards)
No cheques accepted.

HEALTH

It is recommended that guests contact their local travel clinic for advice on the necessary precautionary measures for visits to this region.

SUGGESTED PACKING LIST

- A variety of light-weight and warm clothing as Cape Town's weather can be unpredictable
- A hooded jacket for rainy seasons
- Walking shoes
- Hat
- Sunblock
- Sunglasses
- Camera