



VICTORIA & ALFRED  
HOTEL

BY  
NEWMARK



History and modern luxury merge to create ageless beauty at the Victoria & Alfred Hotel, which was built in 1904 as the North Quay Warehouse. This iconic establishment was named after Queen Victoria and her son, Prince Alfred, who played an intrinsic role in the establishment of the Breakwater Basin, now the V&A Waterfront.

The hotel is located in this acclaimed destination and is a sophisticated retreat amid the buzz. It offers some of the most enviable views of Cape Town Harbour, Table Mountain and the slick city that stretches out at the foot of this Natural Wonder. Timeless elegance and personalised luxury are found at the award-winning Victoria & Alfred Hotel.

## ACCOMMODATION

---

Attention to detail, elegance and an outstanding reputation have set this hotel apart as one of Cape Town's finest establishments. A luxurious stay awaits at each of the ninety-four well-appointed, contemporary rooms, with views of the Alfred Basin, Table Mountain or the piazza. Warm personal service will make you feel at home instantly.

### LOFT ROOMS

The 26 Loft Rooms are roomy, averaging 36m<sup>2</sup> each. The decor is as vibrant as the surrounding V&A Waterfront's atmosphere, with bold colour blocking, quirky artwork and modern finishes.

Each Loft Room features:

- A swivel television with satellite channels
- A minibar
- Complimentary coffee, tea and biscuits
- A king-size bed or twin beds
- Luxury cotton linen
- Air conditioning
- Automated windows
- A writing desk
- An en-suite bathroom
- Bathrobes
- A hairdryer
- An ironing board and iron available on request
- International adaptors available on request
- An electronic safe





## MOUNTAIN FACING ROOMS

The 17 Mountain Facing Rooms boast beautiful views over the Alfred Basin and Table Mountain, giving you a feel of Cape Town's surrounds from your room. These rooms are comfortably spacious, measuring 38m<sup>2</sup>.

Each Mountain Facing Room features:

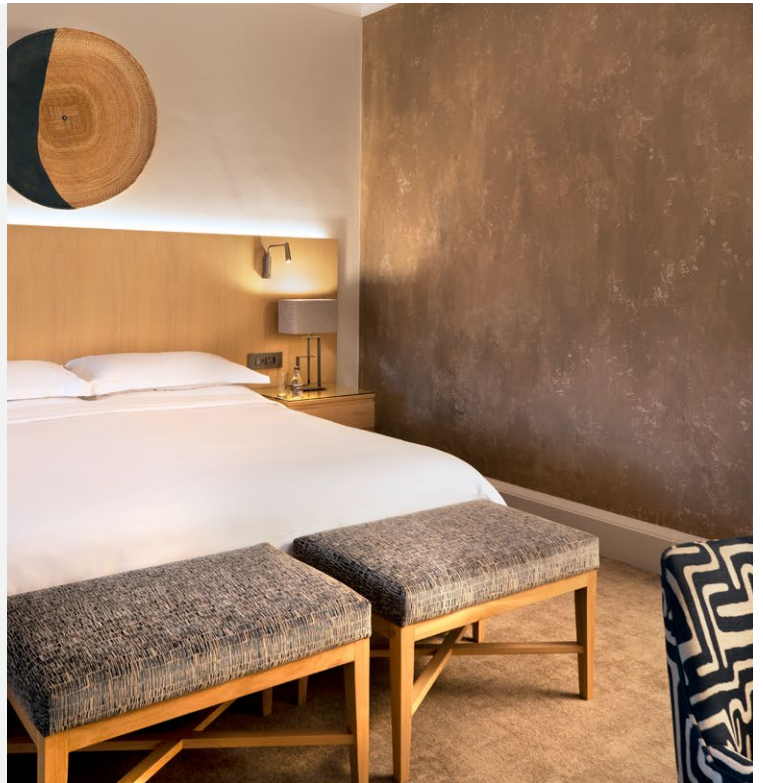
- A swivel television with satellite channels
- A minibar
- Complimentary coffee, tea and biscuits
- A king-size bed or twin beds
- Luxury cotton linen
- Air conditioning
- A writing desk
- An en-suite bathroom
- Bathrobes
- A hairdryer
- An ironing board and iron available on request
- International adaptors available on request
- An electronic safe

## MOUNTAIN FACING LUXURY ROOM

The 17 Mountain Facing Luxury Rooms boast beautiful views over the Alfred Basin and Table Mountain, giving you a feel of Cape Town's surrounds from your room. These rooms are comfortably spacious, with a big lounge area measuring 44 m<sup>2</sup>.

Each Mountain Facing Luxury Room features:

- A swivel television with satellite channels
- A minibar
- Complimentary coffee, tea and biscuits
- A king-size bed or twin beds
- Luxury cotton linen
- Air conditioning
- A writing desk
- An en-suite bathroom
- Bathrobes
- A hairdryer
- An ironing board and iron available on request
- International adaptors available on request
- An electronic safe



## PIAZZA FACING ROOMS

The 34 Piazza Facing Rooms offer views of the energetic piazza. Glimpses of the V&A Waterfront culture, which includes traditional music and performers, can be enjoyed from these rooms. These rooms are comfortably spacious, measuring 38 to 44 m<sup>2</sup>.

Each Piazza Facing Room features:

- A swivel television with satellite channels
- A minibar
- Complimentary coffee, tea and biscuits
- A king-size bed or twin beds
- Luxury cotton linen
- Air conditioning
- A writing desk
- An en-suite bathroom
- Bathrobes
- A hairdryer
- An ironing board and iron available on request
- International adaptors available on request
- An electronic safe



## SERVICES & FACILITIES

- Wi-Fi throughout the hotel
- Complimentary beverage on arrival
- Laundry and dry-cleaning at an additional cost
- Housekeeping offered twice daily
- Room service available 24-hours a day
- Eco-friendly electricity and water-saving facilities
- Secure parking available for guests
- Accessible facilities for persons with limited mobility.
- Swimming pool available at The Dock House
- Sanctuary Spa at The Dock House
- Gym available at The Dock House.

## TERRARIUM BY CHRIS ERASMUS

Terrarium by Chef Chris Erasmus is an edgy fine-dining restaurant, nestled in the Queen Victoria Hotel. Founded on a farm to table ethos, focusing on seasonal, hyperlocal ingredients infused with creativity and innovation, choose from an eight-course Fauna or Flora menu or Small Plates bar menu.



## GINJA RESTAURANT

Situated in the V&A Waterfront at the Victoria & Alfred Hotel, GINJA offers contemporary dining and a chic atmosphere. Experience an exquisite winelist showcasing the region's finest wineries, whilst taking in uninterrupted views of Table Mountain. Open daily from breakfast to dinner, as well as an exceptional Sunday brunch spread.



## SWIMMING POOL AT DOCK HOUSE BOUTIQUE HOTEL

---

A pristine swimming pool, surrounded by a beautiful courtyard at Dock House Boutique Hotel, offers guests the opportunity to cool off on warm days. A bar and a number of deck chairs alongside the pool invite guests to relax and absorb the view of Table Mountain.



## SANCTUARY SIGNATURE SPA

---

This modern and elegant spa allows guests to unwind completely, with a variety of treatments and world-class products available. Guests are further able to book a relaxing session in the Tylarium, a unique combination of both a traditional sauna and a soft, mild steam bath.



## GYM

---

Guests are welcome to make use of the fully equipped gym, located next to Sanctuary Signature Spa. Personal training sessions are offered upon request, at an additional cost.

## MEETINGS & CONFERENCES

---

For business professionals looking for the ideal conference venue in the Western Cape, there are a few properties that stand out as leading conferencing locations. When it comes to high-level meetings attended by CEOs, directors, valued staff or, in some cases, dignitaries and members of parliament, your setting should be as elegant as it is welcoming. Newmark Hotels & Reserves portfolio has a range of world-class conference facilities in Cape Town to ensure that all your business needs are met.

Contact [info@newmarkhotels.com](mailto:info@newmarkhotels.com), should you wish to book.





## WEDDINGS & EVENTS

---

Surrounded by Cape Town's world-famous harbour, Table Mountain, and a bustling city district, event hosts can look forward to an unmatched venue where a variety of events can be held. The facilities are spacious, modern, and sophisticated. These characteristics, together with outstanding service levels offer event hosts assurance that their function, be it a birthday or anniversary celebration, a cocktail event or networking gathering, will be a success. The location provides ample photographic opportunities, and the liveliness of the V&A Waterfront adds an unparalleled atmosphere to special occasions.

## GENERAL INFORMATION

---

### CHECK-IN AND CHECK-OUT TIMES

Check-in: 14H00  
Check-out: 11H00

### DISTANCES

25 km to Cape Town International Airport  
2 km to Cape Town International Convention Centre  
2 km to Cape Town CBD

### CHILD & EXTRA BED POLICY

#### Child Minding Service

A child minding service is available upon request at an additional cost. Please provide a minimum of 24 hours' notice.

#### Age Classifications

- Infant: Under 2 years
- Child: 2 to 11 years
- Adult: 12 years and older (charged at the adult rate)

#### Accommodation Guidelines

- Infants (under 2 years): Complimentary stay in a cot. One cot per room, subject to availability.
- Children (2-11 years): Extra bed rates apply. One extra bed per room, available on request in Mountain and Piazza Facing Rooms (subject to availability).
- Interconnecting Rooms: Available in Mountain and Piazza Facing Rooms only (subject to availability).
- Loft Rooms: Cannot accommodate a cot or extra bed.

### ADDRESS

#### Physical Address:

On the Waterfront Pierhead  
Cape Town  
8001  
South Africa

#### Postal Address:

P.O. Box 50050  
Waterfront  
8002  
South Africa

#### GPS Co-ordinates:

-33.906396 | 18.419823

Nearest drop-off point for the V&A Hotel and Ginja is the Time Out Market

### CONTACT

#### Reservations:

Tel: +27 21 427 5900  
Email: [reservations@newmarkhotels.com](mailto:reservations@newmarkhotels.com)

#### Hotel:

Tel: +27 21 419 6677  
Email: [reservations@newmarkhotels.com](mailto:reservations@newmarkhotels.com)  
[www.newmarkhotels.com](http://www.newmarkhotels.com)

## LOCALITY

---

### TEMPERATURE

**Average Day Temperatures:**  
26°C (December to March)  
21°C (April to May)  
19°C (June to September)  
22°C (October to November)

### ELECTRICITY

220 V  
International adaptors are available on a returnable deposit basis

### CURRENCY

South African Rand (ZAR)  
All credit cards are accepted  
No cheques accepted

### HEALTH

It is recommended that guests contact their local travel clinic for advice on the necessary precautionary measures for visits to this region

### SUGGESTED PACKING LIST

- A variety of light-weight and warm clothing, as Cape Town's weather can be unpredictable
- A hooded jacket for rainy seasons
- Walking shoes
- Beachwear
- Hat
- Sunblock
- Sunglasses
- Camera

## ABOUT CAPE TOWN

---

Cape Town, otherwise known as "The Mother City", is a cherished destination among locals and internationals alike. The city is the legislative capital of South Africa and is located on a peninsula, on the country's southwest coast. It has, in recent years, been named the best place in the world to visit by leading international media – and the reasons for this are unmistakable. Cape Town is rich in natural beauty, diversity, entertainment, and world-class developments.

The region's Mediterranean climate makes for pleasant summers, although winds can pick up. Notwithstanding Cape Town's unpredictable weather, which has earned it the reputation of having four seasons in one day, the city experiences an average of over 3 000 hours of sunshine a year. Winters are typically rainy, but the city takes on a cosy, European atmosphere.

