



MCMXXVIII

# THE WINCHESTER

BOUTIQUE HOTEL

BY

**NEWMARK**





# THE WINCHESTER BOUTIQUE HOTEL

## A 1920's ICON STEEPED IN LUXURY, EMBELLISHED WITH MODERN FLAIR

Impossible to miss, The Winchester Hotel, now proudly holding a 4-star grading, commands attention with its bold appeal on the edge of the ever-vibrant Sea Point Promenade. The Winchester Hotel's exterior is distinguished by two gables, typical of Cape Revivalist architecture, and exudes elegance from days gone by.

Beyond the entrance, guests are met with sophisticated black-and-white finishes, detailed ceilings and modern decor that have been brought together artfully and create a grand setting which leads to the hotel's central and equally grandiose courtyard. The property also features an on-site restaurant and bar, spa, conferencing facilities, and a pool and terrace area. Although extensively renovated in 2021, The Winchester Hotel maintains its innate charm and a sense of nostalgia that so many from Cape Town and around the world have come to know and love. Its prime location and much-loved offerings, from laid-back jazz brunches to sundowners on its sea-facing terrace, set this special property apart.



**78 STYLISH ROOMS | ON-SITE DINING | ON-SITE SPA  
SWIMMING POOL | MEETING FACILITIES**



## A ROOM WITH A VIEW

With seventy-eight rooms in total, The Winchester Hotel offers a selection of tastefully appointed Suites, Classic Rooms and Lofts that are characterised by a monochromatic theme with splashes of colour and quirky accents. Each room has been fitted with furnishings and decorative accessories that create a contemporary aesthetic yet nod to the hotel's rich history. Select rooms offer remarkable ocean or that elevate the hotel's calm ambiance. All rooms cater to guests' comfort with generous amenities and thoughtful finishing touches.

---

### LOFT ROOMS

25m<sup>2</sup>-45m<sup>2</sup> | 2 Guests | 14 Rooms

---

### CLASSIC ROOMS

25m<sup>2</sup>-45m<sup>2</sup> | 2 Guests | 28 Rooms

---

### LUXURY ROOMS

25m<sup>2</sup>-45m<sup>2</sup> | 3 Guests | 9 Rooms

---

### JUNIOR SUITES

25m<sup>2</sup>-45m<sup>2</sup> | 3 Guests | 8 Suites

---

### JUNIOR SEA-FACING SUITES

25m<sup>2</sup>-45m<sup>2</sup> | 2 Guests | 13 Suites

---

### LUXURY BALCONY SUITE

59m<sup>2</sup> | 4 Guests | 3 Suites

---

### FAMILY SUITE

25m<sup>2</sup>-45m<sup>2</sup> | 2 Guests | 2 Suite

---

### PREMIUM SUITE

78m<sup>2</sup> | 2 Guests | 1 Suite



### ROOM EXTRAS

Television with satellite channels • Mini fridge  
Complimentary coffee, tea and biscuits  
King bed • Luxury cotton line • Air conditioning  
Writing desk • En-suite bathroom with separate bath and shower • Bathrobes and slippers • Hairdryer  
International plugs (Available upon request)  
Electronic safe • Complimentary water and wifi



## LOFT ROOMS

The 14 Loft Rooms are comfortable, measuring between 25 and 45 m<sup>2</sup>, and feature lovely views of the hotel's courtyard that enhance the hotel's calm ambiance.

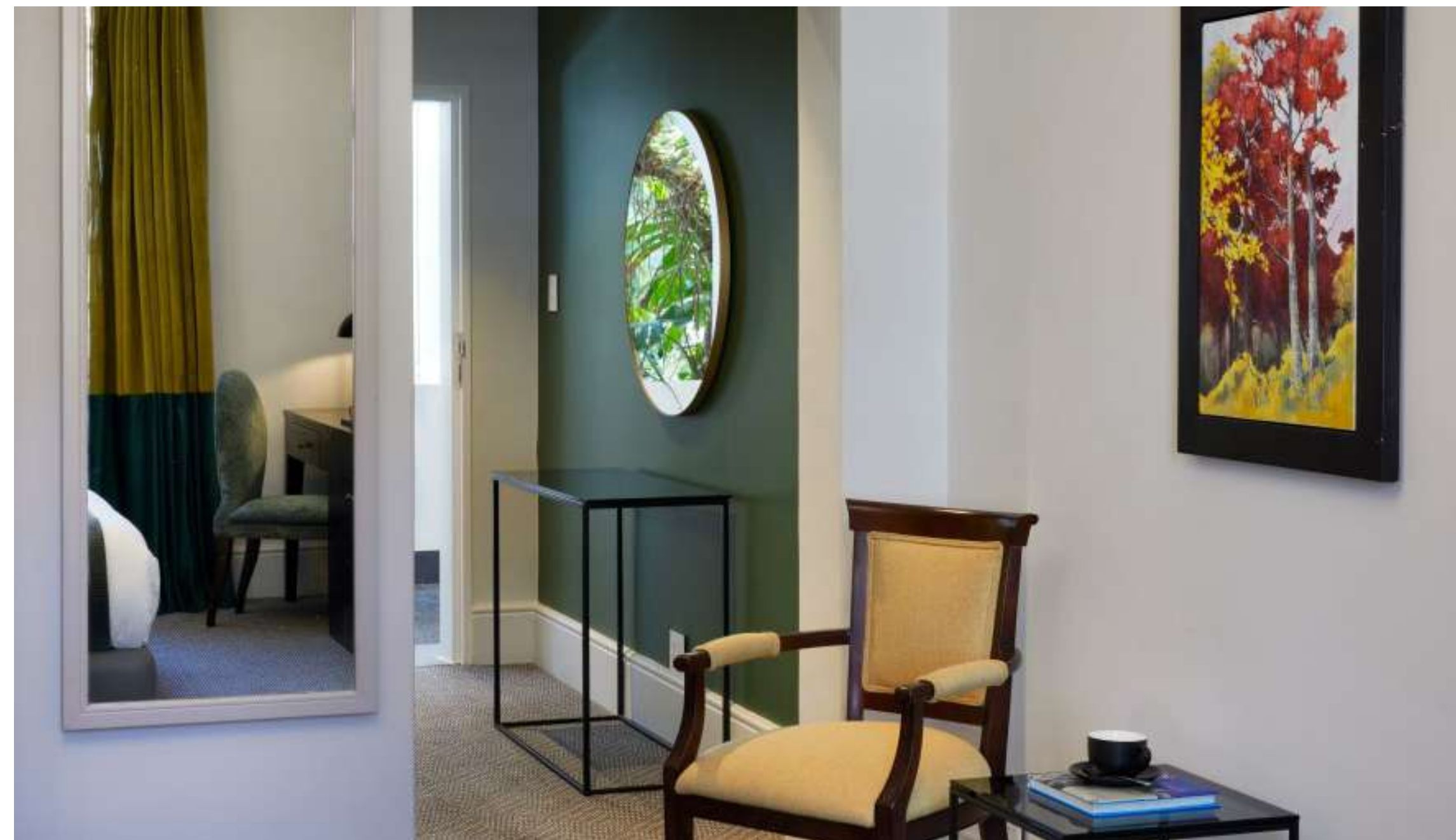


### Each Loft Room features:

- A television with satellite channels
- A minibar – contact reception for a tailor-made selection
- Complimentary coffee, tea and biscuits
- A king-size bed
- Luxurious cotton bedding
- Air conditioning
- An en-suite bathroom
- Bathrobes and slippers
- A hairdryer
- International adaptors available on request
- An electronic safe

## CLASSIC ROOMS

The 28 Classic Rooms measure between 25 and 45 m<sup>2</sup>. Although these rooms are non-sea facing, they have been fitted with furnishings and decorative accessories that create an alluring setting.



### Each Classic Room features:

- A television with satellite channels
- A minibar – contact reception for a tailor-made selection
- Complimentary coffee, tea and biscuits
- A king-size bed
- Luxurious cotton bedding
- Air conditioning
- An en-suite bathroom
- Bathrobes and slippers
- A hairdryer
- International adaptors available on request
- An electronic safe

## LUXURY ROOMS

The 9 Luxury Rooms measure between 25 and 45 m<sup>2</sup>. These rooms are sea facing, they have been fitted with furnishings and decorative accessories that create an alluring setting.



### Each Luxury Room features:

- A television with satellite channels
- A minibar – contact reception for a tailor-made selection
- Complimentary coffee, tea and biscuits
- A king-size bed
- Luxurious cotton bedding
- Air conditioning
- An en-suite bathroom
- Bathrobes and slippers
- A hairdryer
- International adaptors available on request
- An electronic safe

## JUNIOR SUITES

These 8 suites are comfortably spacious, measuring an average of 25 to 45 m<sup>2</sup>. To ensure accessible features for guests with limited mobility, kindly request room 314.



### Each Junior Suite features:

- A television with satellite channels
- A minibar – contact reception for a tailor-made selection
- Complimentary coffee, tea and biscuits
- A king-size bed
- Luxurious cotton bedding
- Air conditioning
- A separate lounge area
- An en-suite bathroom
- Bathrobes and slippers
- A hairdryer
- International adaptors available on request
- An electronic safe



## JUNIOR SEA-FACING SUITES

The 13 Junior Sea-Facing Suites are also comfortably spacious, measuring between 25 and 45 m<sup>2</sup>, and feature views of the expansive Atlantic Ocean beyond the Sea Point Promenade.

### Each Junior Sea-Facing Suite features:

- A television with satellite channels
- A minibar – contact reception for a tailor-made selection
- Complimentary coffee, tea and biscuits
- A king-size bed
- Luxurious cotton bedding
- Air conditioning
- A separate lounge area
- An en-suite bathroom
- Bathrobes and slippers
- A hairdryer
- International adaptors available on request
- An electronic safe



## LUXURY BALCONY SUITES

The 3 Luxury Balcony Suites are incredibly spacious, measuring 59 m<sup>2</sup>. 2 of the Suites feature breath-taking views of the Atlantic Ocean and the adjacent Sea Point Promenade.



### Each Luxury Balcony Suite features:

- A television with satellite channels
- A minibar – contact reception for a tailor-made selection
- Complimentary coffee, tea and biscuits
- A king-size bed
- Luxurious cotton bedding
- Air conditioning
- An en-suite bathroom
- Bathrobes and slippers
- A hairdryer
- International adaptors available on request
- An electronic safe

## FAMILY SUITES

There are 2 Family Suites at The Winchester Hotel, both, equally comfortable and spacious, measuring at 25 to 45 m<sup>2</sup>, with one large bedroom with an en-suite bathroom, and a smaller second bedroom. It also features a large separate lounge with a TV.

---

### Each Family Suite features:

- A television with satellite channels
- A minibar – contact reception for a tailor-made selection
- Complimentary coffee, tea and biscuits
- Two bedrooms with a king-size or twin beds
- Luxurious cotton bedding
- Separate lounge area
- Air conditioning
- Shared bathroom between the two rooms
- Bathrobes and slippers
- A hairdryer
- International adaptors available on request
- An electronic safe



## PREMIUM SUITE

The exclusive Premium Suite is generously spacious at 78 m<sup>2</sup> and is also set up in a classic presidential-suite style, with luxury amenities and an impressive bathroom. This suite similarly boasts captivating views of the Sea Point Promenade and beyond, out over the expansive Atlantic Ocean.



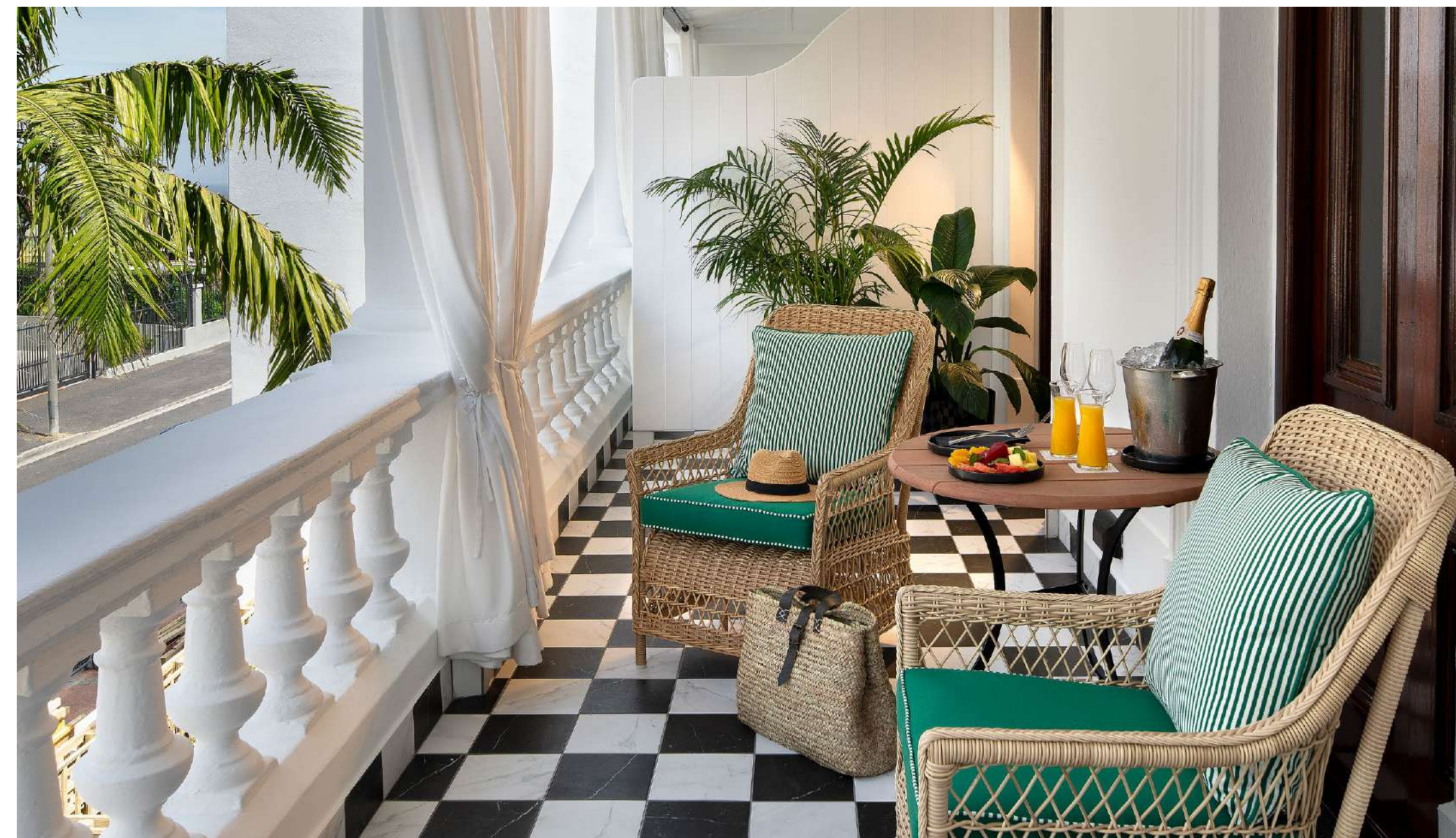
### Premium Suite features:

- A television with satellite channels
- A minibar – contact reception for a tailor-made selection
- Complimentary coffee, tea and biscuits
- A king-size bed
- Luxurious cotton bedding
- Air conditioning
- A separate lounge area
- An en-suite bathroom
- Bathrobes and slippers
- A hairdryer
- International adaptors available on request
- An electronic safe



## LUXURY BALCONY SUITE | ROOM 110

Experience the harmonious blend of space, comfort, and connectivity with our Luxury Balcony Suite. Room 110 has a separate communal lounge area (35m<sup>2</sup>). Providing an abundance of space and an array of first-class amenities, promising an experience that surpasses all expectations. Enjoy the serene garden views from your private balcony and the added convenience of a dedicated arrival lounge, all harmoniously combined for an unforgettable stay.



### Room 110 | Luxury Balcony Suite features:

- A television with satellite channels
- A minibar – contact reception for a tailor-made selection
- Complimentary coffee, tea and biscuits
- A king-size bed
- Luxurious cotton bedding
- Air conditioning
- A separate lounge area
- An en-suite bathroom
- Bathrobes and slippers
- A hairdryer
- International adaptors available on request
- An electronic safe
- Private balcony
- Garden view



## RESTAURANTS & BARS

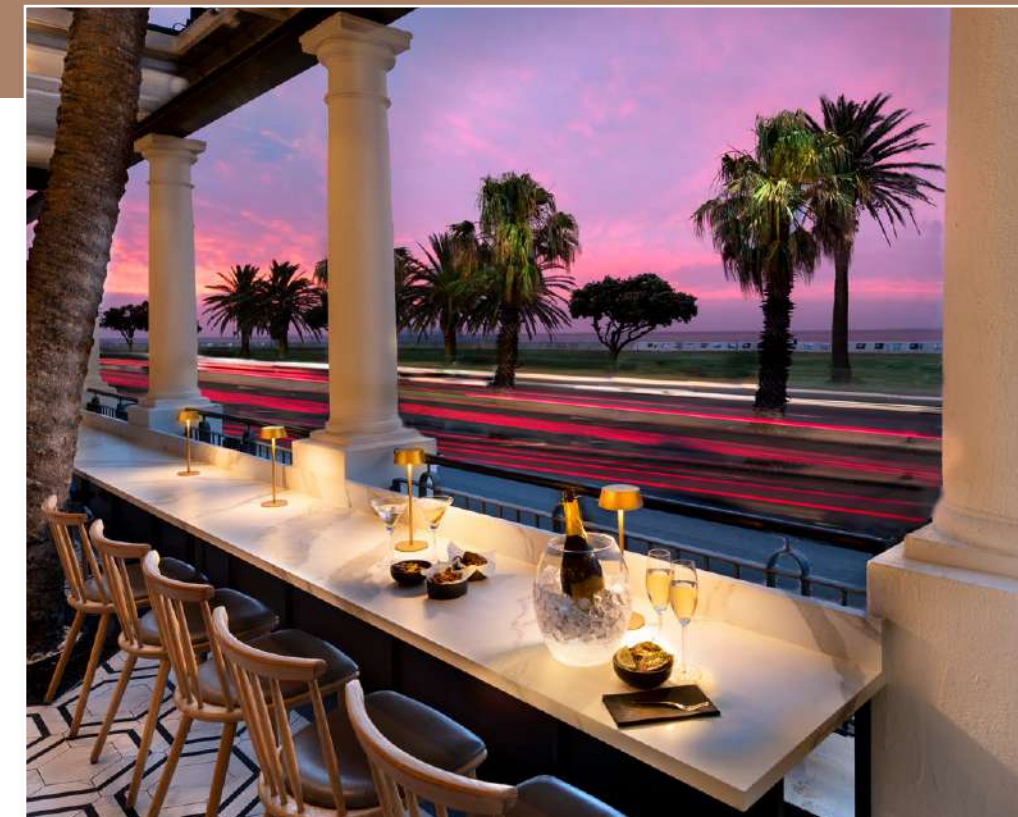
The Winchester's unique food and beverage experience takes on an iconic status of its own. Open to hotel guests and visitors alike, the restaurant and bar offer far more than a stunning setting, providing patrons with top-class culinary offerings.

### SHOREDITCH

The culinary team at Shoreditch has perfected a contemporary menu, free from the constraints of any particularly culinary style, but one: bringing the best of fresh flavours out with flames.

### HARVEY'S BAR

A favourite spot among locals, Harvey's Bar serves a selection of creatively curated beverages as well as enticing menu items, which can be enjoyed while gazing out over the promenade and Atlantic ocean.







## SANCTUARY SPA

Indulge in our complimentary herbal teas while immersing in our serene lounge adorned with lush decor and ambient lighting. Our seasoned therapists employ premium products, ensuring exceptional results that will leave you feeling revitalized and renewed. Embark on a journey to discover the essence of tranquility at our exclusive spa sanctuary.

### SERVICES

Three Treatment rooms | Single and couples Room | Outdoor relaxation area | Private changing areas

### OPERATING HOURS

Monday - Sunday: 08:00 - 20:00 | Public Holidays: 08:00 - 20:00

### CONTACT DETAILS

Telephone: +27 21 110 5008 | Email: [spa@winchester.co.za](mailto:spa@winchester.co.za)





## MEETING FACILITIES

The Winchester Hotel's convenient location serves as the perfect spot for conferences, functions or meetings. Its boutique conferencing facilities provide guests who are travelling for business, as well as day visitors, with modern amenities that suit various requirements.



## THE CONSTANCE ROOM

The Constance Room is a stylish room that accommodates up to 60 guests. It has French doors along both sides that allow natural light and fresh air into the venue and is fully air-conditioned for your comfort. This venue is perfect for a large workshop spanning several days, it can also be converted into a lecture theatre or dining venue. The space can be divided into two separate areas – Constance 1 (20 guests) and Constance 2 (40 guests) – offering flexibility for simultaneous sessions or more intimate gatherings.

- Ceiling-mounted drop down 75 inch TVs used for presentations
- Multiple wall-mounted plug points
- High-speed internet connection with the option of enhanced line
- Personalized SSID with password



## THE EXECUTIVE BOARDROOM

The Executive Boardroom can seat a maximum of 10. A glass wall gives it an open appearance. It is equipped with a large LCD-TV for presentations and is fully air-conditioned.

- 55inch Television HDMI connectivity
- Tabletop USB and plug points
- High-speed internet connection with the option of an enhanced line
- Personalized SSID with password



## THE FRANCON ROOM

The Francon Room. Experience the ultimate in luxury and technology in this venue, featuring cutting-edge audiovisual equipment perfect for video conferencing and presentations. The venue is also adorned with stunning original artwork, creating a sophisticated ambiance. Additionally, this versatile venue is ideal for private dining events, offering an exclusive and intimate setting for special occasions. The venue features full air conditioning, sufficient natural light, and flexible lighting settings to suit your specific needs.

- 75 inch Interactive Touch Display
- Video Conferencing available
- HDMI, USB, USC and plug points, available in floor boxes
- High speed internet connection with option of enhanced line Personalized SSID with password



## LOCATION

Cape Town, fondly known as the Mother City, is an award-winning travel destination, owing to its abundant natural beauty, Table Mountain, pristine beaches, its cosmopolitan city centre, nearby wine-producing districts, as well as a strong arts and culture scene and range of restaurants and other points of interest. It is also recognised as a top business destination, with thriving African start-ups and other world-class amenities dotted around the city.

Sea Point is famous for its lengthy promenade, which hugs the coast from Granger Bay to Bantry Bay, and is popular among fitness enthusiasts and families.

The suburb is abuzz with trendy coffee shops, eateries, boutiques and vintage clothing stores. Other major attractions in the area include the Sea Point pavilion and pools, the MOJO Market and the lawns and pathways along the promenade, perfect for leisure activities, all within walking distance of The Winchester Hotel.



## NEARBY ATTRACTIONS

2.3km to Cape Town Stadium

3km to V&A Waterfront shopping centre

4.8km to Clifton 4th Beach

4.9km to Cape Town International Convention Centre

6km to Camps Bay

7.8km to Table Mountain Aerial Cableway

22.5km to Cape Town International Airport

---

## CHILD & EXTRA BED POLICY

### CHILD MINDING SERVICE

A child minding service is available upon request at an additional cost. Please provide at least 24 hours' notice.

### AGE CLASSIFICATIONS

- Infant: Under 2 years
- Child: 2 to 11 years
- Adult: 12 years and older (charged at the adult rate when sharing or occupying their own room)

### ACCOMMODATION GUIDELINES

- Infants (under 2 years): Complimentary stay in a cot. One cot per room, subject to availability.
- Children (2–11 years): One extra bed may be added to a Junior Suite, subject to availability. Child rates apply.
- Family Suite: Accommodates up to 4 guests (2 adults and 2 children, or 4 adults). An additional per-person rate will apply.
- Adjoining Rooms: Available on request, subject to availability.





MCMXXVIII

# THE WINCHESTER

BOUTIQUE HOTEL

BY

**NEWMARK**

[www.newmarkhotels.com](http://www.newmarkhotels.com)

## NEWMARK HOTELS & RESERVES

2nd Floor, Merchant House, 19 Dock Road, V&A Waterfront Cape Town, South Africa, 8001

**Tel:** +27 21 427 5901

**Reservations:** [reservations@newmarkhotels.com](mailto:reservations@newmarkhotels.com)

**General information:** [info@newmarkhotels.com](mailto:info@newmarkhotels.com)

---

## THE WINCHESTER BOUTIQUE HOTEL

221 Beach Road, Sea Point

Cape Town, South Africa, 8001

**Tel:** +27 21 434 2351 | **Email:** [welcome@winchester.co.za](mailto:welcome@winchester.co.za)

[www.newmarkhotels.com](http://www.newmarkhotels.com)