



QUEEN VICTORIA HOTEL
& MANOR HOUSE

BY
NEWMARK

THE QUEEN VICTORIA HOTEL & MANOR HOUSE

WHERE CLASSIC ELEGANCE MEETS CONTEMPORARY DESIGN

The Queen Victoria Hotel, situated in the V&A Waterfront, welcomes guests to experience the very essence of distinguished luxury, where classic elegance meets contemporary design. Its prime location in a quiet, historic precinct in the V&A Waterfront allows for a serene city escape as well as convenient access to a range of outstanding amenities.

The hotel's regal ambience is felt throughout the property, from its triple-volume foyer with a dramatic spiral staircase and glass lift, crystal chandeliers and marble finishes, to its spacious rooms and breathtaking suites.

31 ROOMS & 3 SUITES | ON-SITE DINING | SWIMMING POOL | ON-SITE GYM | SANCTUARY SPA

ACCOMMODATION

A ROOM WITH A VIEW

The QV comprises 31 rooms and three suites, each carrying the same essence of sophistication and understated opulence. Every room and suite has been tastefully decorated, bearing splashes of the royal shade, purple, customised wallpaper, artwork of local fynbos and the like, all suited to the property and its location.

DELUXE ROOM • 38-46m² | 2 Guests | 15 Rooms **PREMIUM ROOMS** • 35-54m² | 2 Guests | 13 Rooms
PREMIUM LUXURY ROOMS • 35-54m² | 2 Guests | 3 Rooms **JUNIOR MOUNTAIN SUITE** • 63m² | 2 Guests | 1 Room
EXECUTIVE SUITE • 50m² | 2 Guests | 1 Room **PRESIDENTIAL SUITE** • 124m² | 2 Guests | 1 Room

ROOM EXTRAS

Television with satellite channels • Minibar • Complimentary coffee, teas and biscuits • King-size bed
Luxurious 300-thread cotton bedding • Air conditioning • En-suite bathroom • Heated towel rails • Bathrobes and slippers
Hairdryer • International plugs (Upon Request) • Electronic safe • Balcony with views (Presidential and Executive Suite)





DELUXE ROOMS

The 15 Deluxe Rooms are wonderfully spacious, and include a range of luxurious amenities.

38-46m² | 2 Guests | 15 Rooms

ROOM EXTRAS

- A television with satellite channels • A minibar
- Complimentary coffee and tea • A king-size bed
- Luxury cotton linen • Air conditioning • An en-suite bathroom
- Heated towel rails • Bathrobes and slippers • A hairdryer
- International adaptors available on request
- An electronic safe

PREMIUM ROOMS

Similar to the Deluxe Rooms, the 13 Premium Rooms are generously spacious, and include all the same amenities. These rooms boast stunning views of Table Mountain, Lions Head or Cape Town's harbour or both.

35-54m² | 2 Guests | 13 Rooms

ROOM EXTRAS

- A television with satellite channels • A minibar
- Complimentary coffee and tea • A king-size bed
- Luxury cotton linen • Air conditioning • An en-suite bathroom
- Heated towel rails • Bathrobes and slippers • A hairdryer
- International adaptors available on request
- An electronic safe



PREMIUM LUXURY ROOM

Similar to the Deluxe Rooms, the 3 Premium, and include all the same amenities. These rooms boast stunning views of Table Mountain, Lions Head or Cape Town's harbour or both.

35m² | 2 Guests | 3 Room

ROOM EXTRAS

- Television with satellite channels • Minibar
- Complimentary coffee, teas and biscuits • King-size bed
- Luxury cotton linen • Air conditioning • En-suite bathroom
- Heated towel rails • Bathrobes and slippers • Hairdryer
- International plugs, adaptors available on request
- Electronic safe



JUNIOR MOUNTAIN SUITE

Offering exceptional views of Table Mountain and the harbour, the exclusive Junior Mountain Suite is a superb option for a luxurious stay. Includes a range of luxurious amenities.

63m² | 2 Guests | 1 Room

ROOM EXTRAS

- A balcony with views
- Television with satellite channels
- Minibar
- Complimentary coffee, teas and biscuits
- King-size bed
- Luxury cotton linen
- Air conditioning
- A spacious lounge
- En-suite bathroom
- Heated towel rails
- Bathrobes and slippers
- Hairdryer
- International adaptors available on request
- Electronic safe



EXECUTIVE SUITE

The Executive Suite offers stunning courtyard views and is an excellent choice for an opulent experience at the Queen Victoria Hotel. Appointed with a range of top-class amenities.

50m² | 2 Guests | 1 Room

ROOM EXTRAS

- Television with satellite channels
- Complimentary coffee, teas and biscuits
- King-size and twin beds
- Luxury cotton linen
- Air conditioning
- Separate lounge
- En-suite bathroom
- Bathrobes and slippers
- Hairdryer
- International adaptors available on request
- Electronic safe

PRESIDENTIAL SUITE

The crème de la crème, Presidential Suite offers breathtaking views of Table Mountain and the harbour. It has been designed to merge the flow of interior and exterior spaces to maximise these vistas. With an impressive range of amenities, you'll have a truly regal experience

124m² | 2 Guests | 1 Room

ROOM EXTRAS

- A wraparound balcony with exceptional views
- An outdoor double chaise lounge bed
- Television with satellite channels
- Minibar
- Complimentary coffee, teas and biscuits
- King-size bed
- Luxury cotton linen
- Air conditioning
- A large, contemporary lounge
- A spacious dining room
- An unconventionally large en-suite bathroom
- Heated towel rails
- Bathrobes and slippers
- Hairdryer
- International adaptors available on request
- Electronic safe



DINING AT THE QUEEN VICTORIA

TERRARIUM BY CHRIS ERASMUS

Terrarium by Chef Chris Erasmus is an edgy fine-dining restaurant, nestled in the Queen Victoria Hotel. Founded on a farm to table ethos, focusing on seasonal, hyperlocal ingredients infused with creativity and innovation, choose from an eight-course Fauna or Flora menu or à la Carte menu. Making use of various cooking methods and indigenous ingredients, Terrarium is a contemporary spin on sustainable dining in the urban landscape.



GINJA RESTAURANT

Situated in the V&A Waterfront at the Victoria & Alfred Hotel, GINJA offers contemporary dining and a chic atmosphere. Experience an exquisite wine list showcasing the region's finest wineries, whilst taking in uninterrupted views of Table Mountain. Open daily from breakfast to dinner, as well as an exceptional Sunday brunch spread.



NATIVE COFFEE ROASTERS

Where craft meets coffee and gourmet is offered on the go, find Native inside GINJA Restaurant. Choose from a delectable selection of cakes, pastries, and confectionery, as well as artisanal sandwiches and salads.



CONFERRING & PRIVATE DINING

THE VICTORIA ROOM

The Queen Victoria Hotel in the V&A Waterfront has introduced its first dedicated conference and private dining venue: the Victoria Room. Designed to seat 12, the space is tailored for intimate corporate gatherings, strategy sessions, and exclusive dining experiences.

Located on the ground floor of the hotel, the Victoria Room complements the property's reputation for five-star sophistication. With interiors conceptualised by designer François du Plessis, the room blends timeless detailing with contemporary elegance, in keeping with the hotel's refined character.

The room is available for day conference packages as well as private dining reservations, giving both business and leisure guests a versatile, elevated setting. Its opening marks a significant milestone for Queen Victoria Hotel, extending the property's luxury offering into the corporate space while maintaining its signature sense of intimacy and exclusivity.



LEISURE FACILITIES

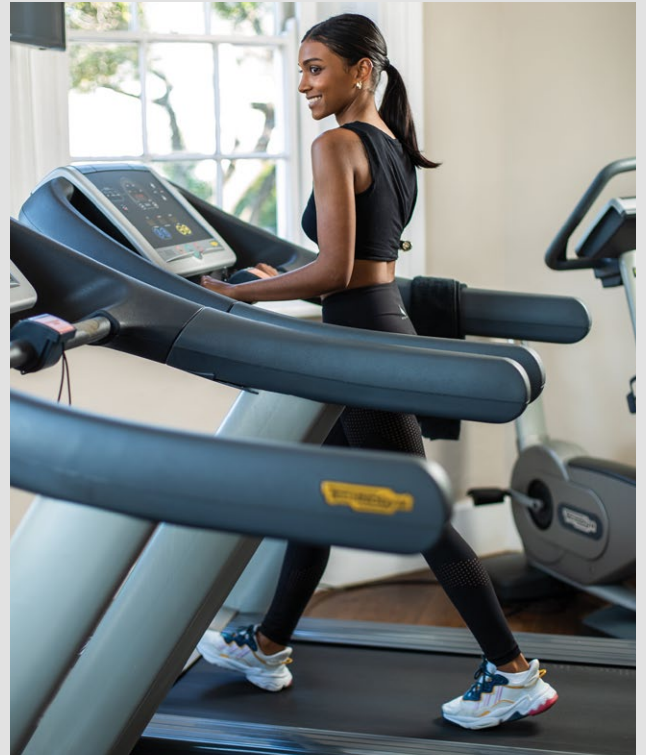
UNWIND AT THE QUEEN VICTORIA HOTEL

A pristine indoor-outdoor pool beckons guests to be refreshed and to take in views of Cape Town's skyline from an exquisite vantage point.



ON-SITE GYM

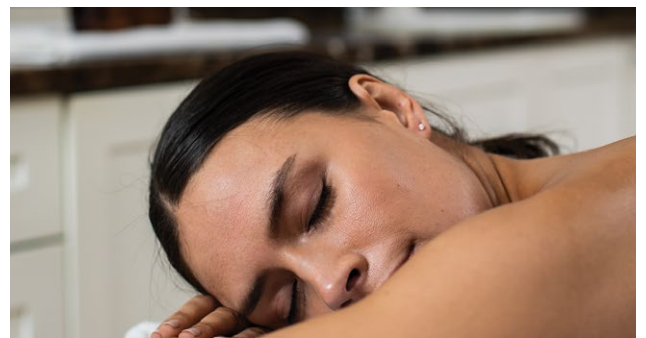
Guests of the Queen Victoria have access to a state-of-the-art gym with the option of hiring a personal trainer at an additional fee, which can be arranged when booking at reception. Treadmills, Pilates balls, a variety of weights, a cycle bike and more can be found at the gym, so that guests can get their workout in, no matter the weather.



SANCTUARY SPA

HEALING THROUGH TOUCH AT SANCTUARY SPA

Our Waterfront Sanctuary Spa is a haven of relaxation, offering an array of treatments from massages, body scrubs, and wraps to facials, anti-ageing therapies, and grooming treatments including manicures, pedicures, waxing, and tints. Guests can also unwind in the spa's serene sauna, enhancing the overall wellness experience.



THE MANOR HOUSE

A LUXE, MODERN MANOR HOUSE WITH 4 SUITES

Adjacent to the Queen Victoria Hotel, Manor House is ideal for families or groups travelling together, as it can be booked out in its entirety and offers guests the ultimate luxury - and privacy, while having access to QV's amenities..

40m² | 8 Guests | 4 Suites

ROOM EXTRAS

- Television with satellite channels • Minibar • Complimentary coffee, teas and biscuits • King-size bed
- Luxurious 300-thread cotton bedding • Air conditioning • En-suite bathroom • Heated towel rails
- Underfloor heating in bathroom • Bathrobes and slippers • Hairdryer • International plugs • Electronic safe



LOCATION

Cape Town, otherwise known as "The Mother City", is a cherished destination among locals and internationals alike. It has, in recent years, been named the best place in the world to visit by leading international media - and the reasons for this are unmistakable. The central region of this city comprises a number of sought-after attractions and suburbs: The V&A Waterfront region and harbour remain abuzz all year round, the CBD boasts world-class establishments and attractions that appeal to both business and leisure travellers, and the Atlantic Seaboard - just minutes from the CBD - offers a laid-back seaside setting.

The region's Mediterranean climate makes for pleasant summers, although winds can pick up. Notwithstanding Cape Town's unpredictable weather, which has earned it the reputation of having four seasons in one day, the city experiences an average of over 3,000 hours of sunshine a year. Winters are typically rainy, but the city takes on a cosy, European atmosphere which is easily appreciated alongside a fireplace.



ACCESS

The Queen Victoria Hotel is situated in the quiet, historic precinct in the V&A Waterfront which allows for a serene city escape as well as convenient access to a range of outstanding amenities.

BY AIR

Daily scheduled flights arrive at The Cape Town International Airport from Johannesburg, Bloemfontein, Durban and internationally. From there, a road transfer at an additional cost can be arranged to The Queen Victoria Hotel in a private, air-conditioned vehicle. The duration of the drive is 25 minutes (distance 17.8km).

BY ROAD

For those wishing to self-drive, the self-drive directions from various provinces or cities are available upon request.

CHILD & EXTRA BED POLICY

CHILD MINDING SERVICE

A child minding service is available upon request at an additional cost. Please provide at least 24 hours' notice.

AGE CLASSIFICATIONS

- Infant: Under 2 years
- Child: 2 to 11 years
- Adult: 12 years and older (charged at the adult rate when sharing or occupying their own room)

ACCOMMODATION GUIDELINES

- Infants (under 2 years): Complimentary stay in a cot. One cot per room, subject to availability.
- Interconnecting Rooms: One set of interconnecting rooms is available at the Manor House and Queen Victoria Hotel, subject to availability.
- Extra Beds: Extra beds cannot be accommodated in any of the rooms. No child rates apply; accommodation is charged per room, per night.

NEARBY ATTRACTIONS

Watershed 0.3km from hotel

V&A Waterfront 0.4km from hotel

Mouille Point Beach 1.1km from hotel

Table Mountain 5.2km from hotel

NEWMARK HOTELS & RESERVES

2nd Floor, Merchant House, 19 Dock Road, V&A Waterfront Cape Town, South Africa, 8001

Tel: +27 21 427 5901

Reservations: reservations@newmarkhotels.com

General information: info@newmarkhotels.com

THE QUEEN VICTORIA HOTEL

Portswood Close, Portswood Ridge, V&A Waterfront

Cape Town, South Africa, 5900

Tel: +27 21 419 6677

www.newmarkhotels.com