



VICTORIA & ALFRED
HOTEL
BY
NEWMARK





VICTORIA & ALFRED HOTEL

History and modern luxury merge to create ageless beauty at the Victoria & Alfred Hotel, which was built in 1904 as the North Quay Warehouse.

This iconic establishment was named after Queen Victoria and her son, Prince Alfred, who played an intrinsic role in the establishment of the Breakwater Basin, now the V&A Waterfront. The hotel is located in this acclaimed destination and is a sophisticated retreat amid the buzz. It offers some of the most enviable views of Cape Town Harbour, Table Mountain and the slick city that stretches out at the foot of this Natural Wonder.

Timeless elegance and personalised luxury are found at the award-winning Victoria & Alfred Hotel.

**94 WELL-APPOINTED ROOMS | WIFI | WELCOME REFRESHMENTS
LAUNDRY | HOUSEKEEPING | ROOM SERVICE | ECO-FRIENDLY
SECURE PARKING | ACCESSIBLE FACILITIES
SWIMMING POOL | SPA | GYM**

A ROOM WITH A VIEW

Attention to detail, its elegance and an outstanding reputation have set this hotel apart as one of Cape Town's finest establishments. A luxurious stay awaits at each of the 94 well-appointed, contemporary rooms, with views of the Alfred Basin, Table Mountain or the piazza. Warm personal service will make you feel at home instantly.

LOFT ROOMS

36m² | 2 Guests | 26 Rooms

MOUNTAIN FACING ROOMS

38m² | 2 Guests | 17 Rooms

MOUNTAIN FACING LUXURY ROOMS

44m² | 2 Guests | 17 Rooms

PIAZZA FACING ROOMS

38-44m² | 2 Guests | 34 Rooms



ROOM EXTRAS

A swivel television with satellite channels • Mini bar • Complimentary coffee, tea and biscuits • A king-size bed or twin beds • Luxury cotton line • Air conditioning • Writing desk
An en-suite bathroom • Bathrobes • A hairdryer • An ironing board and iron available on request • International plugs (Available upon request) • Electronic safe

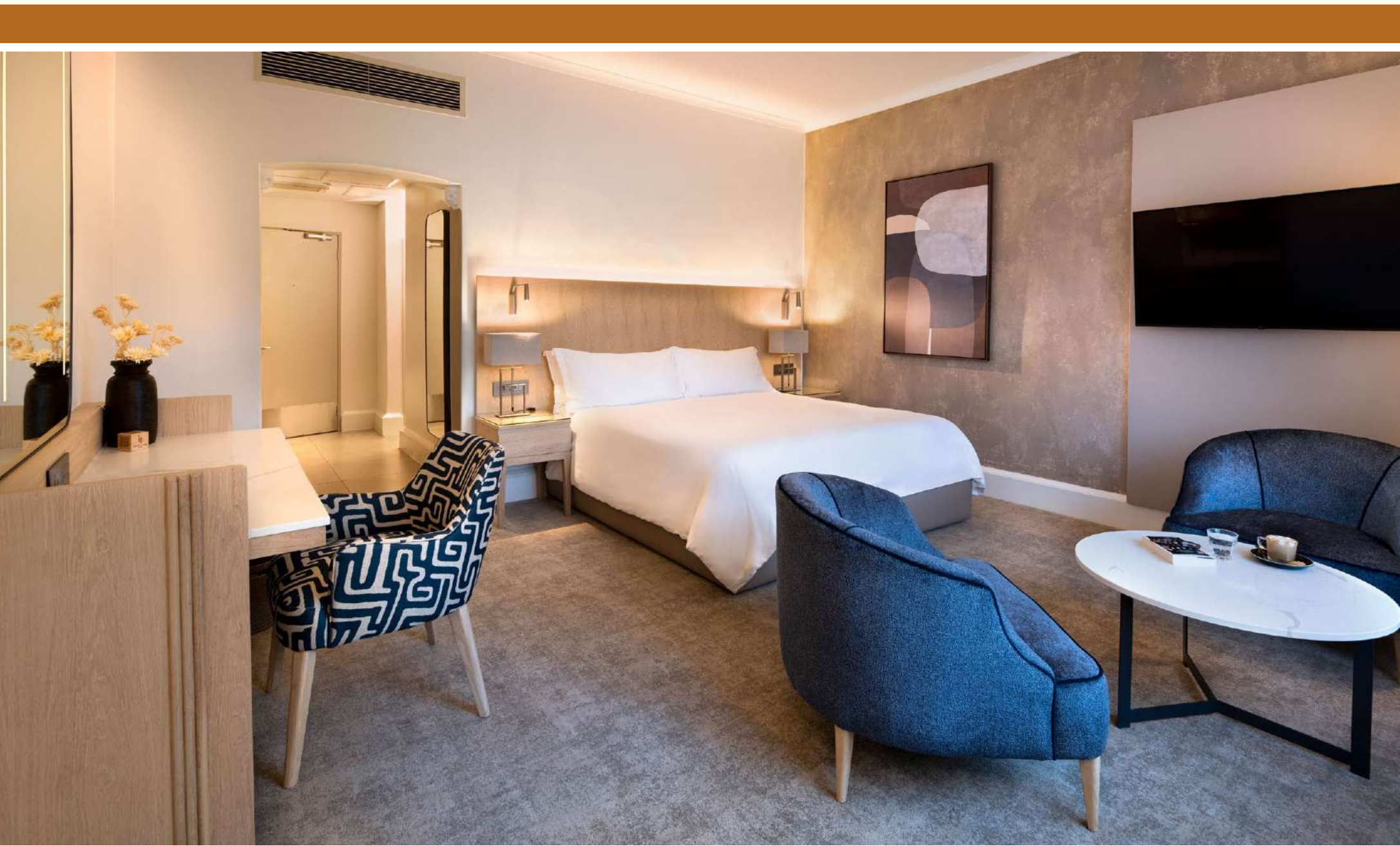
LOFT ROOMS

The 26 Loft Rooms are spacious, averaging 36m² each. The decor is as vibrant as the surrounding V&A Waterfront's atmosphere, with bold colour blocking, quirky artwork and modern finishes.



EACH LOFT ROOM FEATURES

- A swivel television with satellite channels
- A minibar
- Complimentary coffee, tea and biscuits
- A king-size bed or twin beds
- Luxury cotton linen
- Air conditioning
- Automated windows
- A writing desk
- An en-suite bathroom
- Bathrobes
- A hairdryer
- An ironing board and iron available on request
- International adaptors available on request
- An electronic safe



EACH MOUNTAIN FACING ROOM FEATURES

- A swivel television with satellite channels
- A minibar
- Complimentary coffee, tea and biscuits
- A king-size bed or twin beds
- Luxury cotton linen
- Air conditioning
- A writing desk
- An en-suite bathroom
- Bathrobes
- A hairdryer
- An ironing board and iron available on request
- International adaptors available on request
- An electronic safe

MOUNTAIN FACING ROOMS

The 17 Mountain Facing Rooms boast beautiful views over the Alfred Basin and Table Mountain, giving you a feel of Cape Town's surrounds from your room. These rooms are comfortably spacious, measuring 38m².



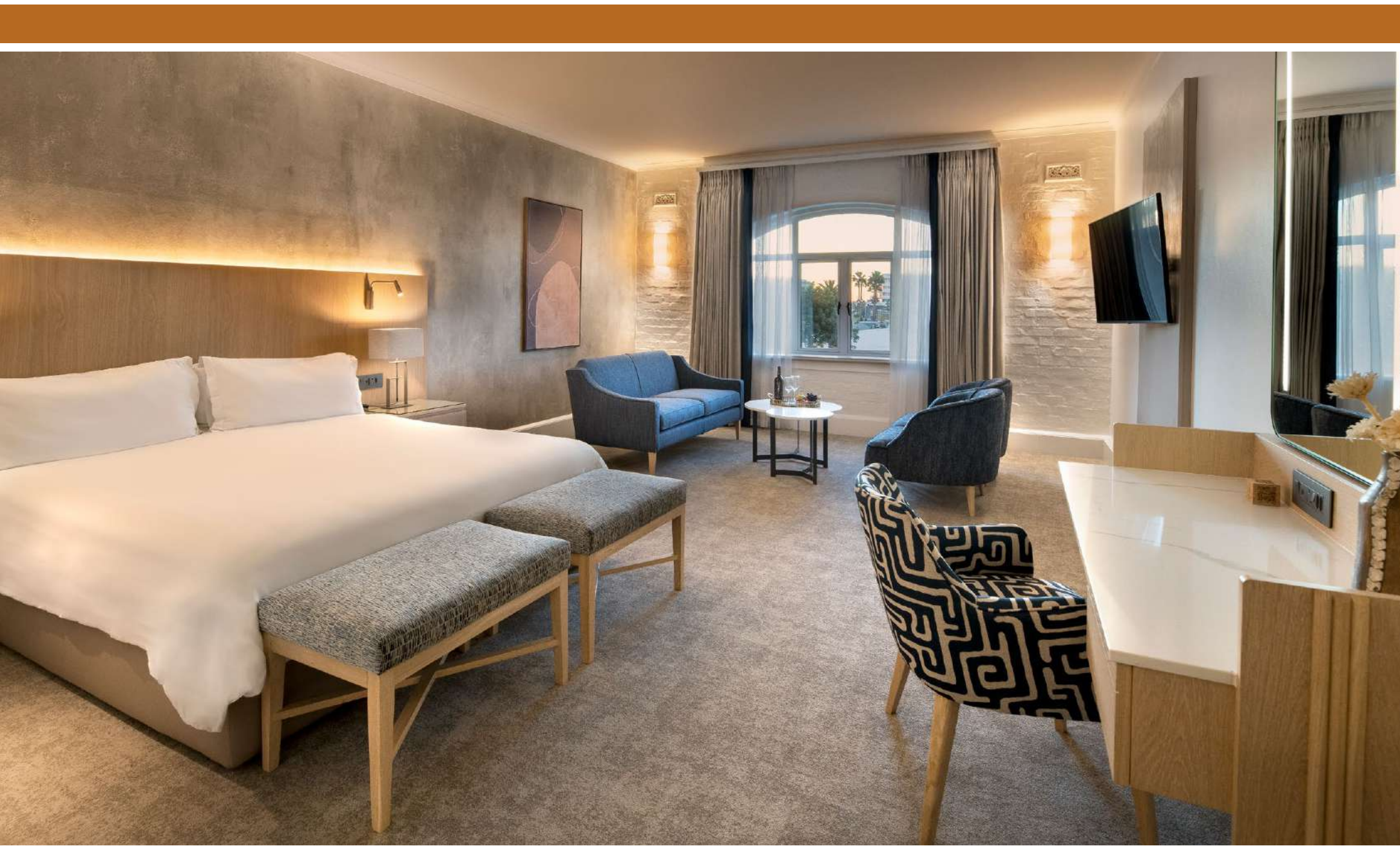
MOUNTAIN FACING LUXURY ROOM

The 17 Mountain Facing Luxury Rooms boast beautiful views over the Alfred Basin and Table Mountain, giving you a feel of Cape Town's surrounds from your room. These rooms are comfortably spacious, with a big lounge area



MOUNTAIN FACING LUXURY ROOM FEATURES

- A swivel television with satellite channels
- A minibar
- Complimentary coffee, tea and biscuits
- A king-size bed or twin beds
- Luxury cotton linen
- Air conditioning
- A writing desk
- An en-suite bathroom
- Bathrobes
- A hairdryer
- An ironing board and iron available on request
- International adaptors available on request
- An electronic safe



PIAZZA FACING ROOM FEATURES

- A swivel television with satellite channels
- A minibar
- Complimentary coffee, tea and biscuits
- A king-size bed or twin beds
- Luxury cotton linen
- Air conditioning
- A writing desk
- An en-suite bathroom
- Bathrobes
- A hairdryer
- An ironing board and iron available on request
- International adaptors available on request
- An electronic safe

PIAZZA FACING ROOMS

The 34 Piazza Facing Rooms offer views of the energetic piazza. Glimpses of the V&A Waterfront culture, which includes traditional music and performers, can be enjoyed from these rooms. These rooms are comfortably spacious,





DINING

TERRARIUM BY CHRIS ERASMUS

Terrarium by Chef Chris Erasmus is an edgy fine-dining restaurant, nestled in the Queen Victoria Hotel. Founded on a farm to table ethos, focusing on seasonal, hyperlocal ingredients infused with creativity and innovation, choose from an eight-course Fauna or Flora menu or Small Plates bar menu.



GINJA RESTAURANT

Situated in the V&A Waterfront at the Victoria & Alfred Hotel, GINJA offers contemporary dining and a chic atmosphere. Experience an exquisite winelist showcasing the region's finest wineries, whilst taking in uninterrupted views of Table Mountain. Open daily from breakfast to dinner, as well as an exceptional Sunday brunch spread.





SWIMMING POOL AT DOCK HOUSE BOUTIQUE HOTEL

A pristine swimming pool, surrounded by a beautiful courtyard at Dock House Boutique Hotel, offers guests the opportunity to cool off on warm days. A bar and a number deck chairs alongside the pool invite guests to relax and absorb the view of Table Mountain.



SANCTUARY SIGNATURE SPA

This modern and elegant spa allows guests to unwind completely, with a variety of treatments and world-class products available. Guests are further able to book a relaxing session in the Tylarium, a unique combination of both a traditional sauna and a soft, mild steam bath.



GYM

Guests are welcome to make use of the fully equipped gym, located next to Sanctuary Signature Spa. Personal training sessions are offered upon request, at an additional cost.



MEETINGS & CONFERENCES

VICTORIA ROOM AT QUEEN VICTORIA HOTEL

Just a stone's throw from the Victoria & Alfred Hotel, the Victoria Room at the Queen Victoria Hotel offers an elegant and private venue for small meetings, strategy sessions, and exclusive dining experiences.

Designed to accommodate up to 12 guests, this sophisticated space combines timeless detailing with contemporary elegance, reflecting the refined character of the hotel. Whether hosting a boardroom-style meeting, intimate conference, or private dinner, guests of the V&A Hotel have access to this versatile venue through tailored day conference and private dining packages.

Conveniently located on the ground floor of the Queen Victoria Hotel, the Victoria Room provides a seamless extension of the luxury hospitality experience enjoyed across the collection.



WEDDINGS & EVENTS

Surrounded by Cape Town's world-famous harbour, Table Mountain, and a bustling city district, event hosts can look forward to an unmatched venue where a variety of events can be held. The facilities are spacious, modern, and sophisticated. These characteristics, together with outstanding service levels offer event hosts assurance that their function, be it a birthday or anniversary celebration, a cocktail event or networking gathering, will be a success. The location provides ample photographic opportunities, and the liveliness of the V&A Waterfront adds an unparalleled atmosphere to special occasions.



GENERAL INFORMATION

CHECK-IN AND CHECK-OUT TIMES

Check-in: 14H00 | Check-out: 11H00

DISTANCES

25 km to Cape Town International Airport
2 km to Cape Town International Convention Centre
2 km to Cape Town CBD

CONTACT

RESERVATIONS:

Tel: +27 21 427 5901
Email: reservations@newmarkhotels.com

HOTEL:

Tel: +27 21 419 6677
Email: reservations@newmarkhotels.com
www.newmarkhotels.com

ADDRESS

PHYSICAL ADDRESS:

On the Waterfront Pierhead
Cape Town
8001
South Africa

POSTAL ADDRESS:

P.O. Box 50050
Waterfront
8002
South Africa

GPS CO-ORDINATES:

-33.906396 | 18.419823

Nearest drop-off point for the V&A Hotel and Ginja is the Time Out Market



CHILD & EXTRA BED POLICY

CHILD MINDING SERVICE

A child minding service is available upon request at an additional cost. Please provide a minimum of 24 hours' notice.

AGE CLASSIFICATIONS

- Infant: Under 2 years
- Child: 2 to 11 years
- Adult: 12 years and older (charged at the adult rate)

ACCOMMODATION GUIDELINES

- Infants (under 2 years): Complimentary stay in a cot. One cot per room, subject to availability.
- Children (2–11 years): Extra bed rates apply. One extra bed per room, available on request in Mountain and Piazza Facing Rooms (subject to availability).
- Interconnecting Rooms: Available in Mountain and Piazza Facing Rooms only (subject to availability).
- Loft Rooms: Cannot accommodate a cot or extra bed.

LOCALITY

TEMPERATURE

AVERAGE DAY TEMPERATURES:

26°C (December to March) | 21°C (April to May)
19°C (June to September) | 22°C (October to November)

ELECTRICITY

220 V | International adaptors are available on a returnable deposit basis

CURRENCY

South African Rand (ZAR) | All credit cards are accepted
No cheques accepted

HEALTH

It is recommended that guests contact their local travel clinic for advice on the necessary precautionary measures for visits to this region

SUGGESTED PACKING LIST

A variety of light-weight and warm clothing, as Cape Town's weather can be unpredictable
A hooded jacket for rainy seasons • Walking shoes • Beachwear • Hat • Sunblock
Sunglasses • Camera

ABOUT CAPE TOWN

Cape Town, otherwise known as “The Mother City”, is a cherished destination among locals and internationals alike. The city is the legislative capital of South Africa and is located on a peninsula, on the country’s southwest coast. It has, in recent years, been named the best place in the world to visit by leading international media – and the reasons for this are unmistakable. Cape Town is rich in natural beauty, diversity, entertainment, and world-class developments.

The region’s Mediterranean climate makes for pleasant summers, although winds can pick up. Notwithstanding Cape Town’s unpredictable weather, which has earned it the reputation of having four seasons in one day, the city experiences an average of over 3 000 hours of sunshine a year. Winters are typically rainy, but the city takes on a cosy, European atmosphere.





VICTORIA & ALFRED
HOTEL

BY
NEWMARK